

CONNECTING YOU TO AUSTRALIAN DESIGN.

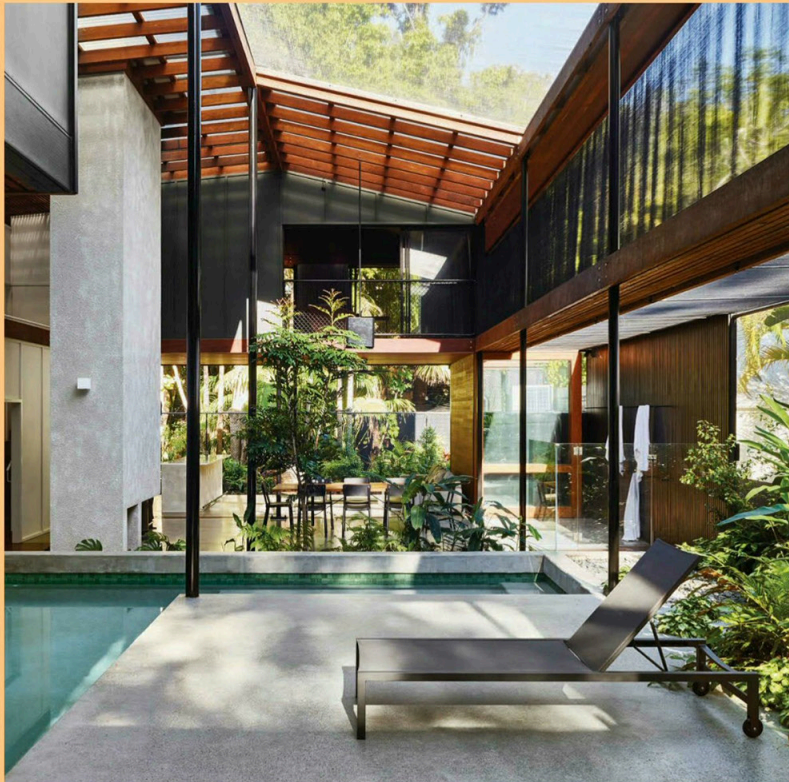
VOL 11

MEZZANINE

PROFILE - JAMES RUSSELL Getting to the heart of this wonderful Brisbane architect's practice, with a selection of recent projects. **VISIT - MEAGHAN WHITE** An architect's home and studio, designed and built over seven years, delivers work-life balance. **SMALL SPACES SURVEY** Exploring two small homes that use smart joinery to maximise utility for their occupants.



9-772205-545006-04 | AU05795



DETAILS

Beautiful, functional things

The artefacts of daily life – furniture, lighting, homewares – are as important to our sense of home as the walls around us and ceiling above us. They provide utility, comfort and visual interest, and help us make our house our own.



Bentu concrete lighting

Guangzhou-based experimental design studio Bentu's products challenge global preconceptions of Chinese design. Its first range of concrete lighting, furniture and homewares was launched at the Milan Furniture Fair in 2013, and attracted attention not just for its emphasis on bold, simple geometry, but also for the use of recycled concrete and ceramics gathered from construction and demolition sites and factories. Bentu products, including everything from plant pots and wall tiles to stools and tables, are available in Australia from Remodern. Its Zhong pendant (pictured) comprises a funnel made from recycled concrete and an anodised aluminium apex. It can be hung individually or in clusters.

remodern.com.au

MEZZANINE

15